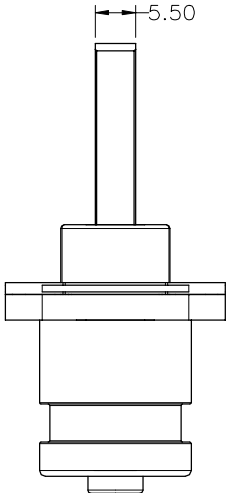
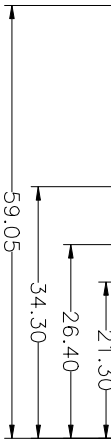
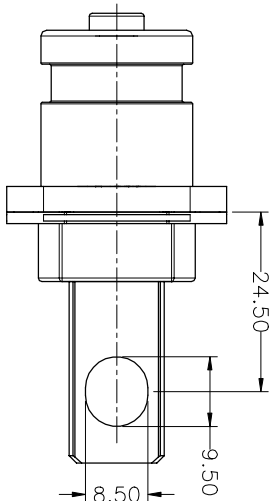
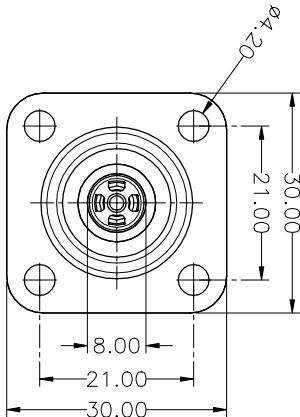
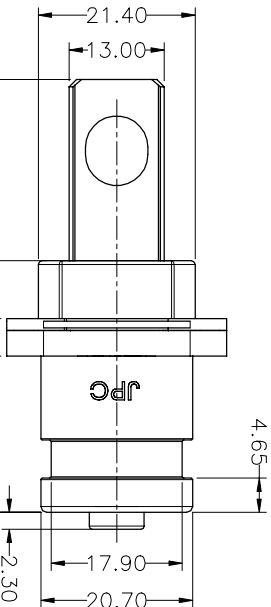
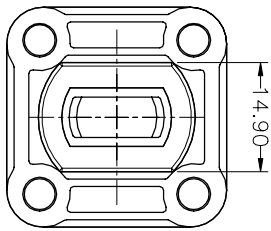
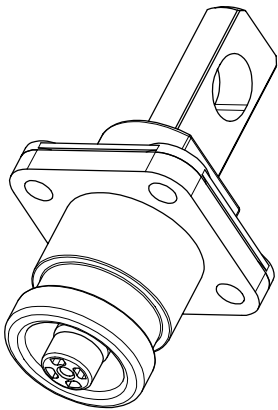
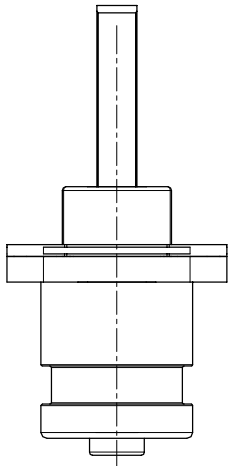


THIS DRAWING AND THE DATA DISCLOSED HEREIN OR HERewith IS NOT TO BE REPRODUCED USED OR DISCLOSED IN WHOLE OR IN PART TO ANYONE WITHOUT THE PERMISSION OF JESS-LINK PRODUCTS CO.,LTD.(JPC)

CUSTOMER DRAWING
DRWC-000951

REV.	ECN NO.	DESCRIPTION	MD'D	AP'D	DATE
01		INITIAL DESIGN	Colin	Andrew	11/17/2020
02		ADD NEW PART NUMBER	Ronnie	Richard	03/18/2022



NOTE:
1.工作溫度Operating temperature:-40~125°C;
2.額定電流Current rating:Power:200A;
3.額定電壓Operating voltage:Power1500VDC;
4.耐電壓Dielectric withstanding voltage:3000 VDC;
5.機械壽命Mating cycle:500.
6.帶二次鎖扣 Secondary lock.
7.料號 Part Number.
PCNBC00XRC78-0

Body Color:
1: Pink
4: Black

RoHS COMPLIANT		HALOGEN FREE		PROJECTION		JPC connectivity	
Unit : mm		GENERAL TOLERANCES (UNLESS SPECIFIED)		D.R. Colin		PSL-200A 插頭 (Customer drawing)	
0 = ±.50		CHLK 11/17/2020		APVD 11/17/2020		PD./FILE NO. C19C0009A	
0.00 = ±.15		Ahoo		SCALE 1:1		REV. 02	
0.00 = ±.05		Andrew		SIZE A4		SHEET 1 OF 1	
0.00 = ±.2				PART NO. PCNBC00XRC78-0			